

Formulate Tablet Kiosk - 04

TABLET-STD-04

Sleekly-designed free standing ipad stands and kiosks make it easy to encourage interactivity, present information and engage your customers in any space. steel portable holder used to display a 7.5"-10.5" iPad or Android tablet. It is perfect for use in retail environments, tradeshow and events. It can be positioned in either portrait or landscape configuration for versatility. Security screws and a specialized Allen key make the unit both durable and theft resistant. The Small Tablet Stand is offered in black.



We are continually improving and modifying our product range and reserve the right to vary the specifications without prior notice. All dimensions and weights quoted are approximate and we accept no responsibility for variance. E&OE. See Graphic Templates for graphic bleed specifications.

features and benefits:

- State-of-the-art 50mm aluminum tube frame with sturdy internal spigot assembly
- Easy to store and ship
- Quick to set up
- 2 bracket sizes available; small and large
Small: 7.5"-10.5 screen sized displays
- Kit includes: one frame, one dye-sublimated pillowcase graphic, tablet holder, and one wheeled molded OCH storage case
- Landscape and Portrait orientation
- Lifetime hardware warranty against manufacturer defects

dimensions:

Hardware

Graphic

Assembled unit:
26.26" w x 45.49" h x 21.71" d
667mm(w) x 1156mm(h) x 552mm(d)

Refer to related graphic template for more information.

Approximate weight with cases:
24 lbs / 10.9 kgs

Visit:
<https://www.theexhibitorshandbook.com/download-graphic-templates>

Shipping

additional information:

Packing case(s):
OCH Case

Graphic material:
Dye-sublimation zipper pillowcase fabric

Shipping dimensions:
OCH:
50" l x 29" w x 12" h
1270mm(l) x 737mm(w) x 305mm(h)

Tablet not included

Approximate total shipping weight
(includes cases & graphics):
53 lbs / 25 kgs

*Refer to last Page for tablet specific fitting

*Remove tablet/ iPad from the shell after use;
do not store the tablet/ iPad in the unit during transit

* Unit not recommended be shipped in molded case due to parts possibly getting scratched



This product may include the following materials for recycle:
aluminum, select wood, fabric, cardboard, paper, steel, and plastics.

Included In Your Kit

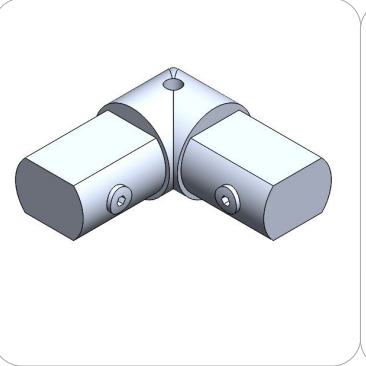
Tools, Components, & Connectors



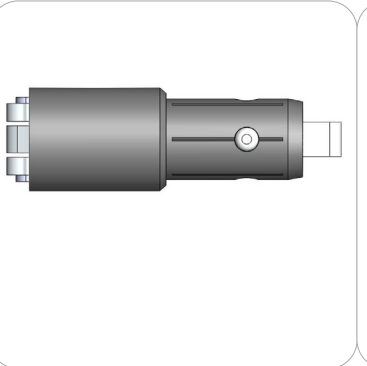
ALLEN KEY SET x1



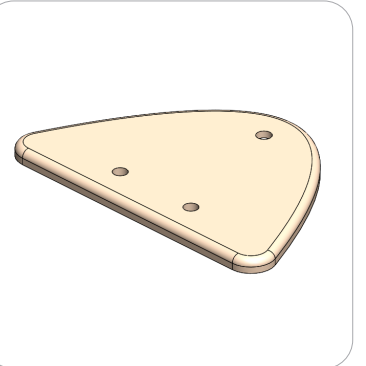
ES30 x2



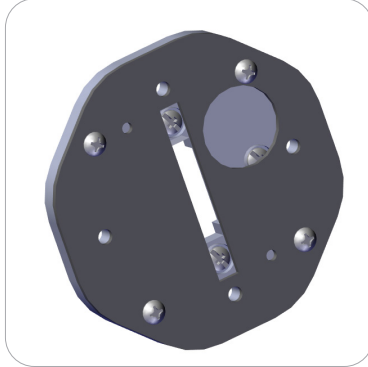
ES50-2W x4



TC-30-L x1



MDF BASE-TABLET-STD-04 x1

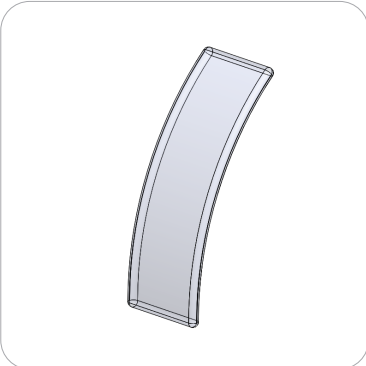


TABLET-STD-ESS-SHELL-PLEX x1



TABLET-STD-ESS-SH-L x1

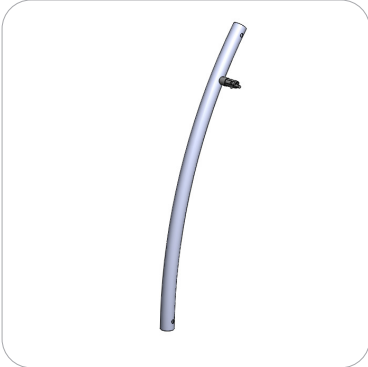
Graphics



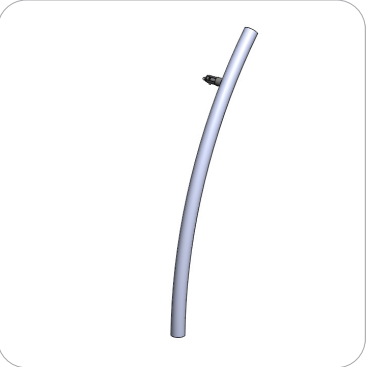
TABLET-STD-04-G x1

Included In Your Kit

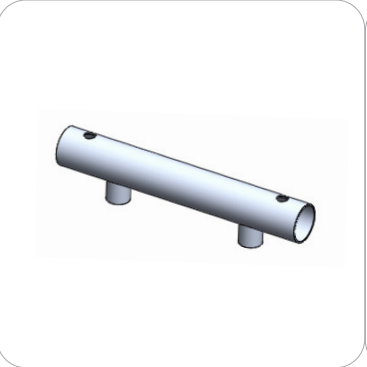
Tubes



STD-04-T1 x1



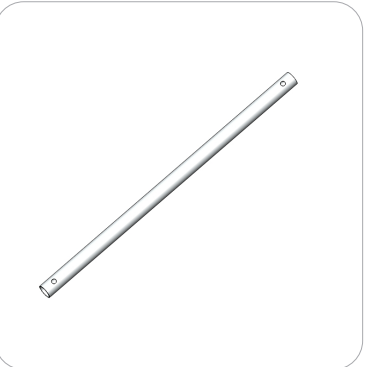
STD-04-T2 x1



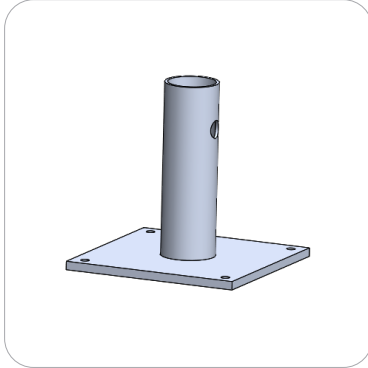
STD-04-T3 x2



STD-04-T4 x1



STD-04-T5 x1

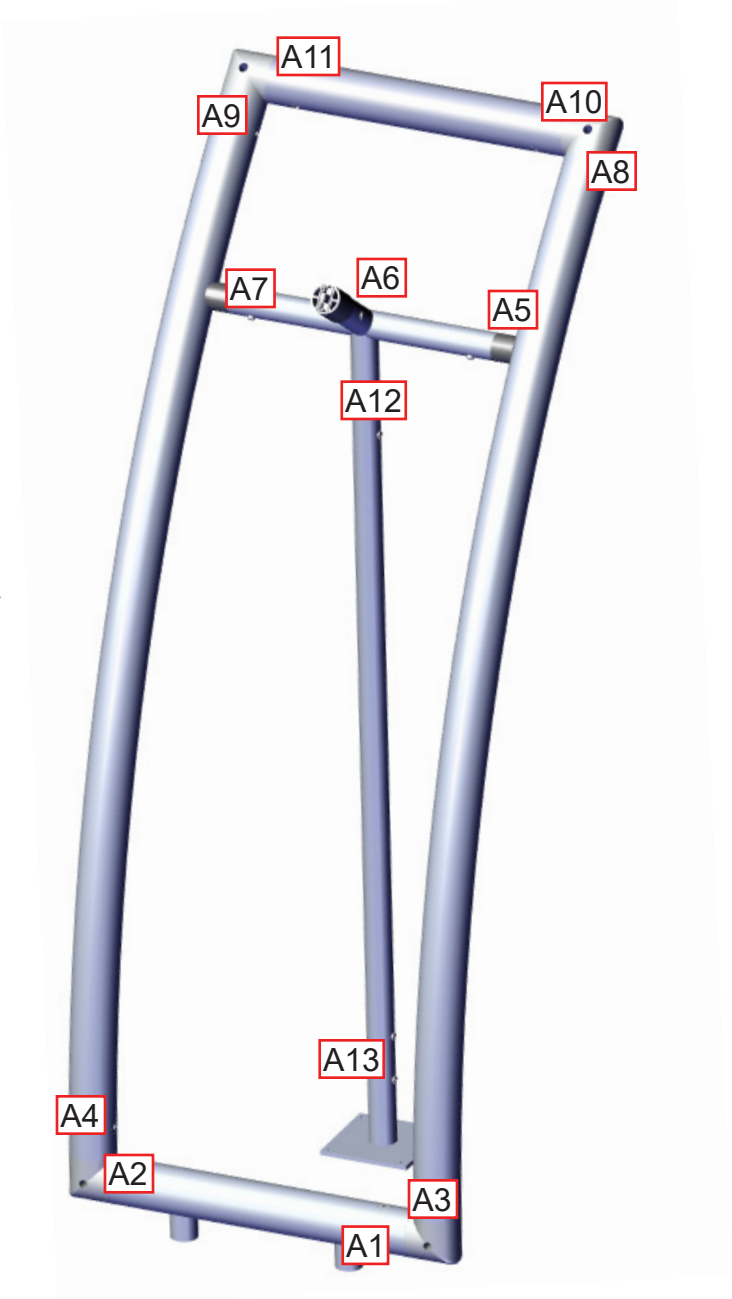


STD-04-T6 x1

Labeling Diagram

TABLET-STD-04

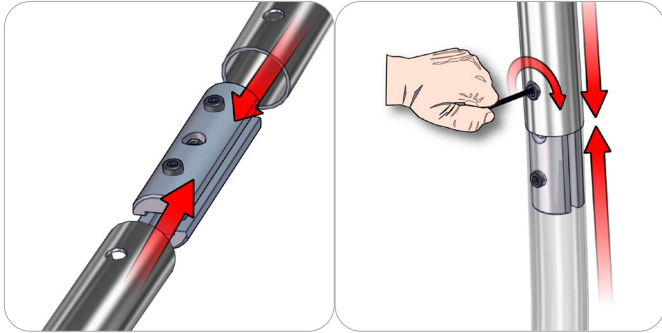
FRAME A



Connection Methods

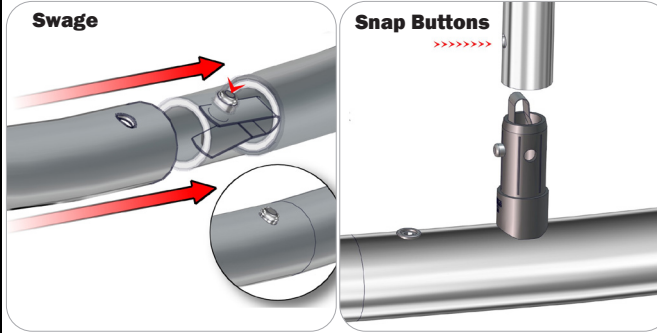
Formulate™ structures use a number of different yet simple connection methods. Your kit will include one or more of the connection methods shown below. Steps within the Kit Assembly will reference a specific method for each connection point.

Connection Method 1: ES30 / ES50 / ES75



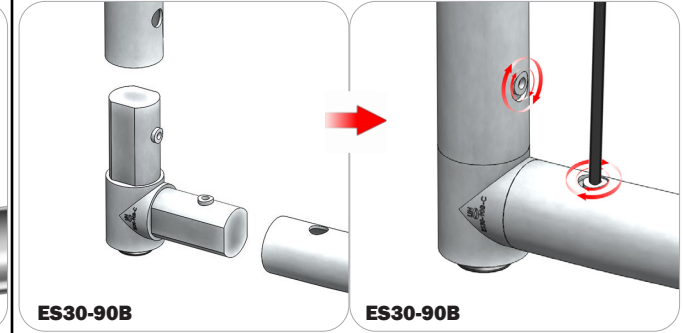
Compress the unlocked connector and slide one tube onto each end. Lock both screws carefully using your allen key tool. Be sure to lock securely, but do not overtighten.

Connection Method 2: Snap Buttons & Swage



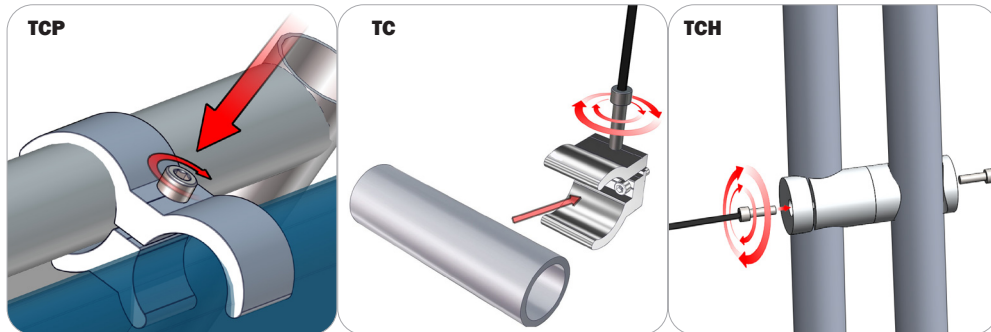
Locate the snap button on the connector or swage tube. Locate the hole on the corresponding tube. Press the snap button with your thumb and slide the tube and connector together so that the snap button snaps fully into the lock hole. To disassemble, press the snap button and pull apart.

Connection Method 3: ES30-90B / ES30-I / ES30-C



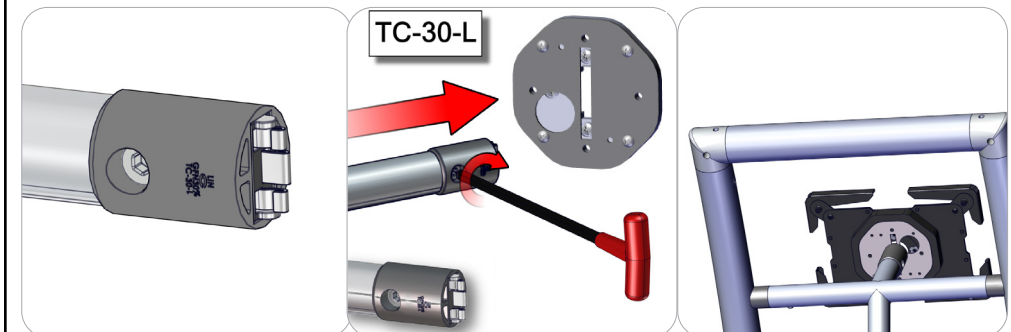
Compress one unlocked end of the connector and slide it through one tube end. Compress the other end of the connector and slide the second tube on. Lock both screws carefully using your allen key tool. Be sure to lock securely, but do not overtighten.

Connection Method 4: Tube Clamps



Be sure to fully assemble all frames before using clamps. With the clamp unlocked, place one tube of the first frame into the mouth of the clamp. Place the second tube (if applicable) into the second mouth of the clamp. With both frame's tubes in the clamp, be sure to lock securely, but do not overtighten.

Connection Method 5: TC-30-L



Compress the unlocked camlock. Insert TC-30-L into slot like shown above. Lock tablet holder to frame using 5mm T-Handle. Be sure to lock securely, but do not overtighten.

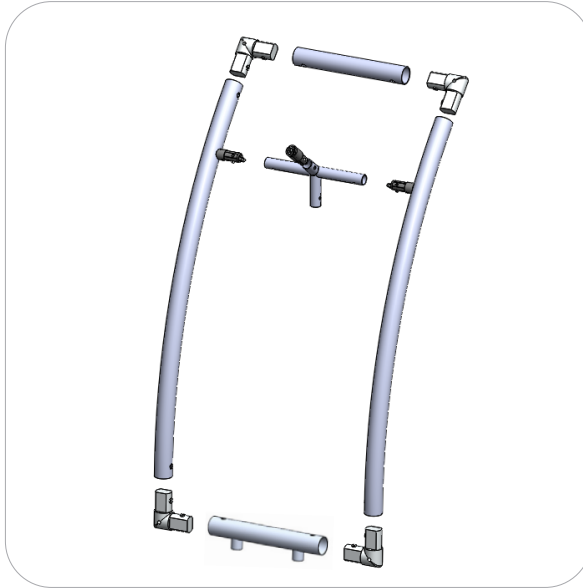
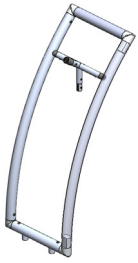
Kit Assembly

Step by Step

Step 1.

Gather the components necessary to assemble your stand. We will add TABLET-STD-04-T5 in a later step. Assemble your frame.

Please reference Connection Methods 1, 2, and 3 for more details.



Step 2.

Locate your TABLET-STD-04-G fabric pillowcase graphic. Pull the pillowcase over the side of the frame and allow protruding tubes and components to stick through the graphics precut holes.

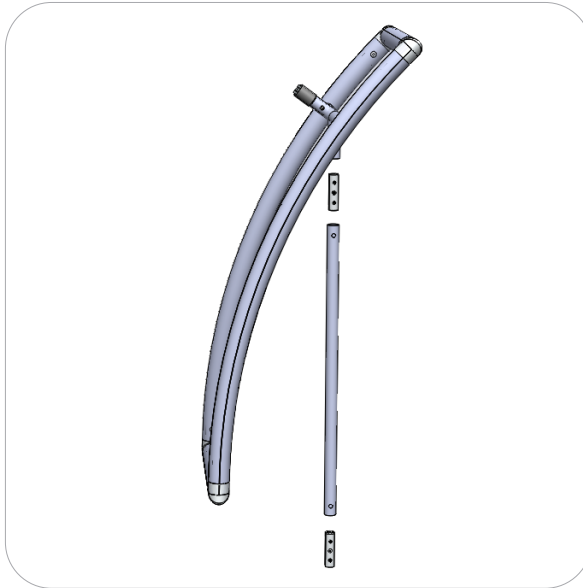
Zip the pillowcase graphic closed.



Step 3.

Locate your ES30 connectors and TABLET-STD-04-T5 and connect them to the back of your stand as shown in the image right.

Please reference Connection Method 1 for more details.



Step 4.

Locate your MDF BASE-TABLET-STD-04 and STD-04-T6. Slide the tube of the STD-04-T6 through the back hole of the base. Lock your frame into the tube protruding from the base.

Please reference Connection Method 1 for more details.

Set up Complete.

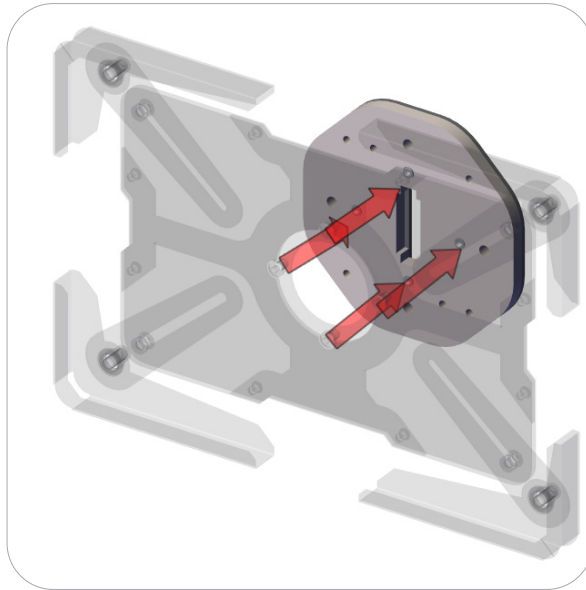


Kit Assembly

Step by Step

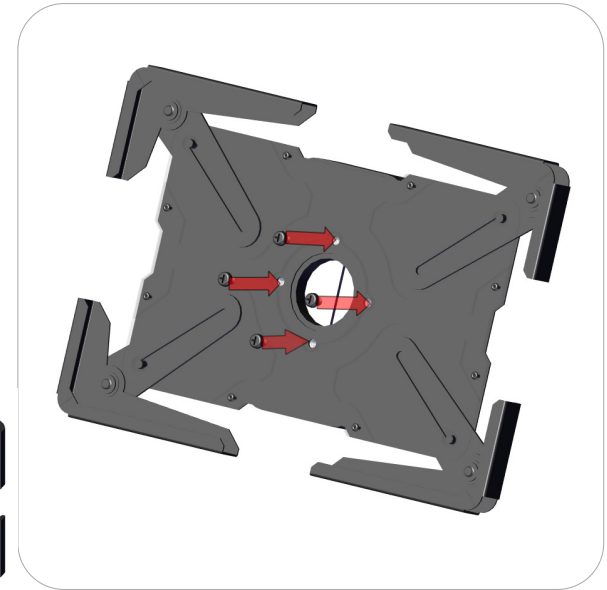
Step 5.

Gather the components necessary to complete this step. Line up tablet holder middle holes with TABLET-STD-ESS-SHELL-PC holes



Step 6.

Insert screws into front of bracket as show. tighten until secure. Do not over tighten. Orientation can not be changed without removing screws first.

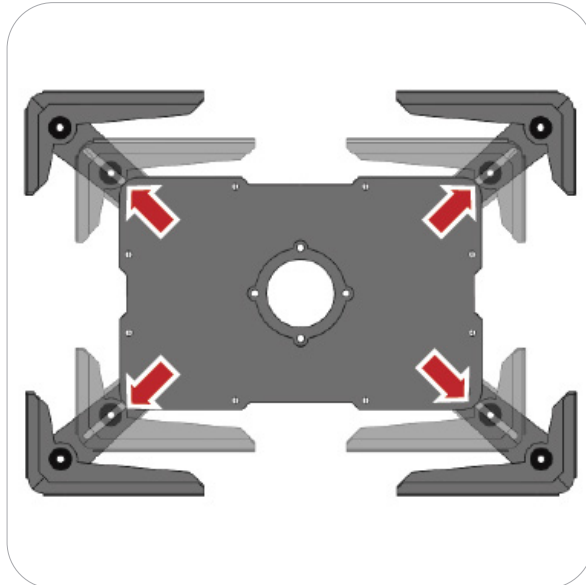


Step 7.

Adjust tablet shell by sliding the grips in the direction indicated by the arrows to fit your tablet. Use the hex key to tighten the fit.

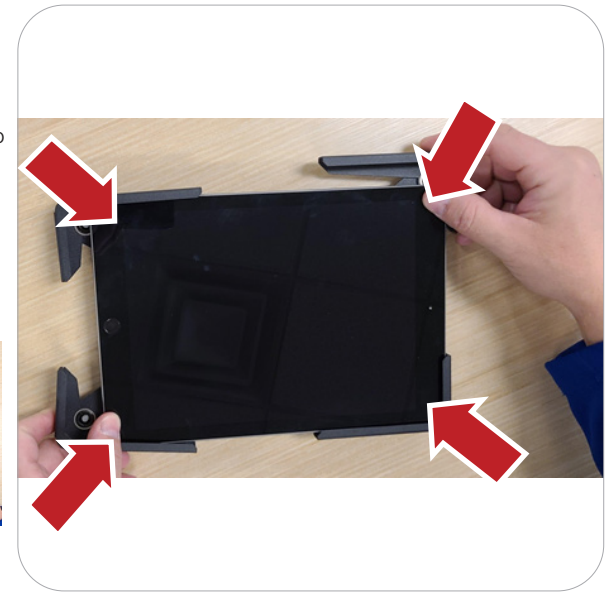


Back View



Step 8.

Insert your tablet into bracket. Collapsed bracket around tablet. Once complete use the hex key to tighten the fit.



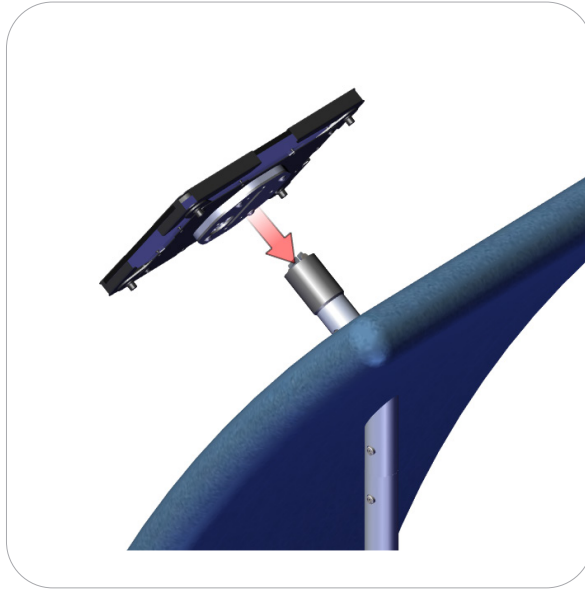
Kit Assembly

Step by Step

Step 9.

Lock tablet holder to frame using 5mm T-Handle. Be sure to lock securely, but do not overtighten.

Please reference Connection Method 5 for more details.



Step 10.

Orientation Change: Remove tablet. Remove screw and rotate holder to desired orientation. Insert screws and tighten. Refer to step 6.

Setup is complete



Choosing Your Size

Use the table below to determine the correct shell size for your tablet.

Common Tablets	Height	Width	Dept	Weight	Screen Size	Shell Size
iPad Tablets						
1st Gen iPad Pro 11 (2018)	9.74"	7.02"	0.23"	1 lb.	11"	Large
2nd Gen iPad Pro 11 (2017)	9.74"	7.02"	0.23"	1 lb.	11"	Large
1st Gen iPad Pro 12 (2017)	12.04"	8.69"	0.27"	1.53 lb.	12.9"	Large
2nd Gen iPad Pro 12 (2017)	12.04"	8.69"	0.27"	1.53 lb.	12.9"	Large
3th Gen iPad Pro 12.9 (2017)	11.04"	8.46"	0.23"	1.4 lb.	12.9"	Large
4th Gen iPad Pro 12.9 (2017)	11.04"	8.46"	0.23"	1.4 lb.	12.9"	Large
New iPad (2018)	9.4"	6.6"	0.29"	1 lb.	9.7"	Small
iPad mini 4	8"	5.3"	0.24"	.66 lb.	7.9"	Small
1st Gen Ipad Air	9.4"	6.6"	0.29"	1.05 lb.	9.7"	Large
2nd Gen Ipad Air	9.4"	6.6"	0.24"	.96 lb.	9.7"	Large
3rd Gen iPad Air (2019)	9.87"	6.85"	0.24"	1 lb.	10.5"	Large
iPad Pro 10.5	9.8"	6.8"	0.24"	1 lb.	10.5"	Large
Ipad Mini 2	7.87"	5.3"	0.29"	.73 lb.	7.9"	Small
Ipad Mini 3	7.87"	5.3"	0.29"	.73 lb.	7.9"	Small
Ipad Mini 4	8"	5.3"	0.24"	0.65 lb.	7.9"	Small
Ipad Mini 5	8"	5.3"	0.24"	0.66 lb.	7.9"	Small
1st Gen Ipad	9.56"	7.74"	0.50"	1.5 lb.	9.7"	Large
2nd Gen Ipad	9.5"	7.3"	0.35"	1.33 lb.	9.7"	Large
3rd Gen Ipad	9.5"	7.3"	0.37"	1.43 lb.	9.7"	Large
4th Gen Ipad	9.5"	7.3"	0.37"	1.43 lb.	9.7"	Large
5th Gen Ipad	9.4"	6.6"	0.29"	1.43 lb.	9.7"	Large
6th Gen Ipad	9.4"	6.6"	0.29"	1.03 lb.	9.7"	Large
7th Gen Ipad	9.87"	6.85"	0.3"	1.09 lb.	10.2	Large
8th Gen Ipad	9.8"	6.8"	0.29"	1.08 lb.	10.2	Large
Android Tablets						
Samsung Galaxy Tab S3	9.34"	6.65"	0.24"	1 lb.	9.7"	Small
Samsung Galaxy Tab S4	9.81"	6.47"	0.28"	1 lb.	10.5"	Large
Microsoft Surface Pro	11.5"	7.9"	0.33"	1.73 lb.	12.3"	Large
Asus ZenPad 3S 10	9.47"	6.44"	0.28"	1 lb.	9.7"	Large
Kindle Fire 10	10.3"	6.3"	0.4"	1.1 lb.	10.1"	Large
Google Nexus 9	8.99"	6.05"	0.31"	1 lb.	8.9"	Small