

Trappa

Trappa frame edges snap open from the front to allow quick and easy graphic changes. No tools required. This sleek framing system features a set of spring-loaded aluminum extrusions mounted to a high-impact polystyrene backer. Available in black and silver. Comes standard with clear non-glare lens, fully assembled, ready to hang.



features and benefits:

- Trappa frame edges snap open
- Easy, quick graphic changes
- Silver or black anodized finish with precision mitered corners
- Comes standard with clear non-glare lens
- Features a set of spring-loaded aluminum extrusions mounted to a high-impact polystyrene backer
- Five year warranty against manufacture defects

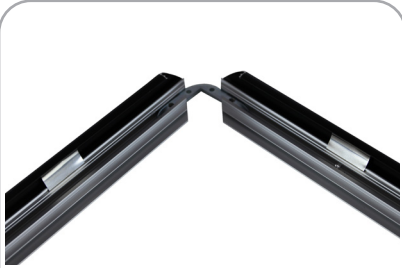
dimensions:

Hardware	Graphic
<p>Assembled unit:</p> <p>TRP2-1: 10.5"w x 13"h</p> <p>TRP2-2: 13"w x 16"h</p> <p>TRP2-4: 18"w x 22"h</p> <p>TRP2-5: 22"w x 26"h</p> <p>TRP2-6: 26"w x 38"h</p> <p>TRP2-7: 24"w x 30"h</p> <p>TRP2-8: 26"w x 32"h</p> <p>TRP2-9: 32"w x 42"h</p> <p>TRP2-11: 13"w x 19"h</p> <p>TRP2-12: 14"w x 20"h</p>	<p>Total visual area:</p> <p>TRP2-1: 8.5"w x 11"h</p> <p>TRP2-2: 11"w x 14"h</p> <p>TRP2-4: 16"w x 20"h</p> <p>TRP2-5: 20"w x 24"h</p> <p>TRP2-6: 24"w x 36"h</p> <p>TRP2-7: 22"w x 28"h</p> <p>TRP2-8: 24"w x 30"h</p> <p>TRP2-9: 30"w x 40"h</p> <p>TRP2-11: 11"w x 17"h</p> <p>TRP2-12: 12"w x 18"h</p>
Shipping	additional information:
<p>Shipping weights and dimensions vary depending on the quantity of product ordered. Contact your dealer for your specific weights and dimensions.</p>	<p>Frame material: anodized aluminum</p> <p>Protective sheet material: pvc</p> <p>Mounting: comes with screws and anchors to mount either portrait or landscape</p>



We are continually improving and modifying our product range and reserve the right to vary the specifications without prior notice. All dimensions and weights quoted are approximate and we accept no responsibility for variance. E&OE. See Graphic Templates for graphic bleed specifications.

Custom-sized, Unassembled Trappa Set-up



Connect two extrusions using corner bracket (if the frame is rectangular make sure to pick two different lengths) **1**



Hold the two edges together and position screws into bracket loosely **2**



Hold the two edges together and tighten screws in place **3**



Repeat previous step **3**



Slide plastic backer into bottom groove of the extrusion **4**



Position two corner brackets into the last, unattached edge **5**



6



Set up complete **7**



Slide cover over and place graphic underneath. **8**



Place graphic underneath and unit is ready. **9**